

General Notes

This drawing is Copyright © Any design or drawing is not to be reproduced, either in whole or part, without written permission by Hayes Anderson Lynch Architects Pty. Ltd. Confirm all dimensions on site. Do not scale off drawings. All levels are approximate only and are subject to confirmation by licenced surveyor. All workmanship, materials and construction to comply with the Queensland Building Act 1975, the Queensland Development Code, the Building Code of Australia 2016, Premises Standard and AS1428.1. Work to be carried out in a neat and appropriate manner. Where ambiguities or discrepancies exist, Hayes Anderson Lynch Architects Pty. Ltd. shall be contacted for clarification.



22/08/18	L	Sign Off	EA
18/06/18	K	Preliminary Sign Off	EA
18/06/18	J	Preliminary Presentation	EA
14/06/18	H	Preliminary Presentation	EA
13/06/18	G	Preliminary Presentation	EA
08/06/18	F	Preliminary Presentation	EA
06/06/18	E	Preliminary Presentation	EA
05/06/18	D	Preliminary Presentation	EA
01/05/18	C	Preliminary Presentation	EA
25/05/18	B	Preliminary Presentation	EA
23/05/18	A	Preliminary Presentation	EA
Date	Issue	Details	Checked



ARCHITECTS
TOWN PLANNERS
INTERIOR DESIGNERS

3 / 709 MAIN STREET
KANGAROO POINT QLD 4169

P + 61 7 3 8 5 2 3 1 9 0
E reception@halarchitects.com.au
W www.halarchitects.com.au

Project
PART A - Master Plan
Harris Lane, Windsor



Queensland
Government

WINDSOR STATE SCHOOL

PART A - 20 YEAR MASTER PLAN

JUNE 2018

DoE Project No: [34-151290]

Drawing Title
Tile Page

Scale @ A3	Drawn: EA/DZ	Checked: EA
Project Number H2680WIN	Drawing Number SD001	Issue L

Table of Contents

Section 1

1.1	Master Plan - Location and Catchment Plan	SD003
-----	---	-------

Section 2

2.1	Master Plan - Concept Plan - Colour Palette	SD004
2.2	Master Plan - Overlays - Colour Palette	SD004

Section 3

3.1	Master Plan - Ideas Explored	SD005
3.2	Master Plan - Concept Plan	SD006
3.3	Master Plan - Landscape & Circulation Plan	SD007
3.4	Master Plan - Heritage Overlay	SD008
3.5	Master Plan - PWD Pedestrian Access Overlay	SD009
3.6	Master Plan - Staging Overlay	SD010

Section 4

4.1	A Block Plans	SD011
4.2	B Block Plans	SD012
4.3	C & D Block Plans	SD013
4.4	E Block Plans	SD014
4.5	Proposed G & H Block Ground & Level 1 Plans	SD015
4.6	Proposed G & H Block Level 2 Plan	SD016

Section 5

5.1	Ideas Board 1	SD017
5.2	Ideas Board 2	SD018
5.3	Ideas Board 3	SD019

PART A MASTER PLAN

General Notes

This drawing is Copyright © Any design or drawing is not to be reproduced, either in whole or part, without written permission by Hayes Anderson Lynch Architects Pty. Ltd. Confirm all dimensions on site. Do not scale off drawings. All levels are approximate only and are subject to confirmation by licenced surveyor. All workmanship, materials and construction to comply with the Queensland Building Act 1975, the Queensland Development Code, the Building Code of Australia 2016, Premises Standard and AS1428.1. Work to be carried out in a neat and appropriate manner. Where ambiguities or discrepancies exist, Hayes Anderson Lynch Architects Pty. Ltd. shall be contacted for clarification.



22/08/18	L	Sign Off	EA
18/06/18	K	Preliminary Sign Off	EA
18/06/18	J	Preliminary Presentation	EA
14/06/18	H	Preliminary Presentation	EA
13/06/18	G	Preliminary Presentation	EA
08/06/18	F	Preliminary Presentation	EA
06/06/18	E	Preliminary Presentation	EA
05/06/18	D	Preliminary Presentation	EA
01/05/18	C	Preliminary Presentation	EA
25/05/18	B	Preliminary Presentation	EA
23/05/18	A	Preliminary Presentation	EA
Date	Issue	Details	Checked



ARCHITECTS
TOWN PLANNERS
INTERIOR DESIGNERS

3 / 709 MAIN STREET
KANGAROO POINT QLD 4169

P + 61 7 3 8 5 2 3 1 9 0
E reception@halarchitects.com.au
W www.halarchitects.com.au

Project

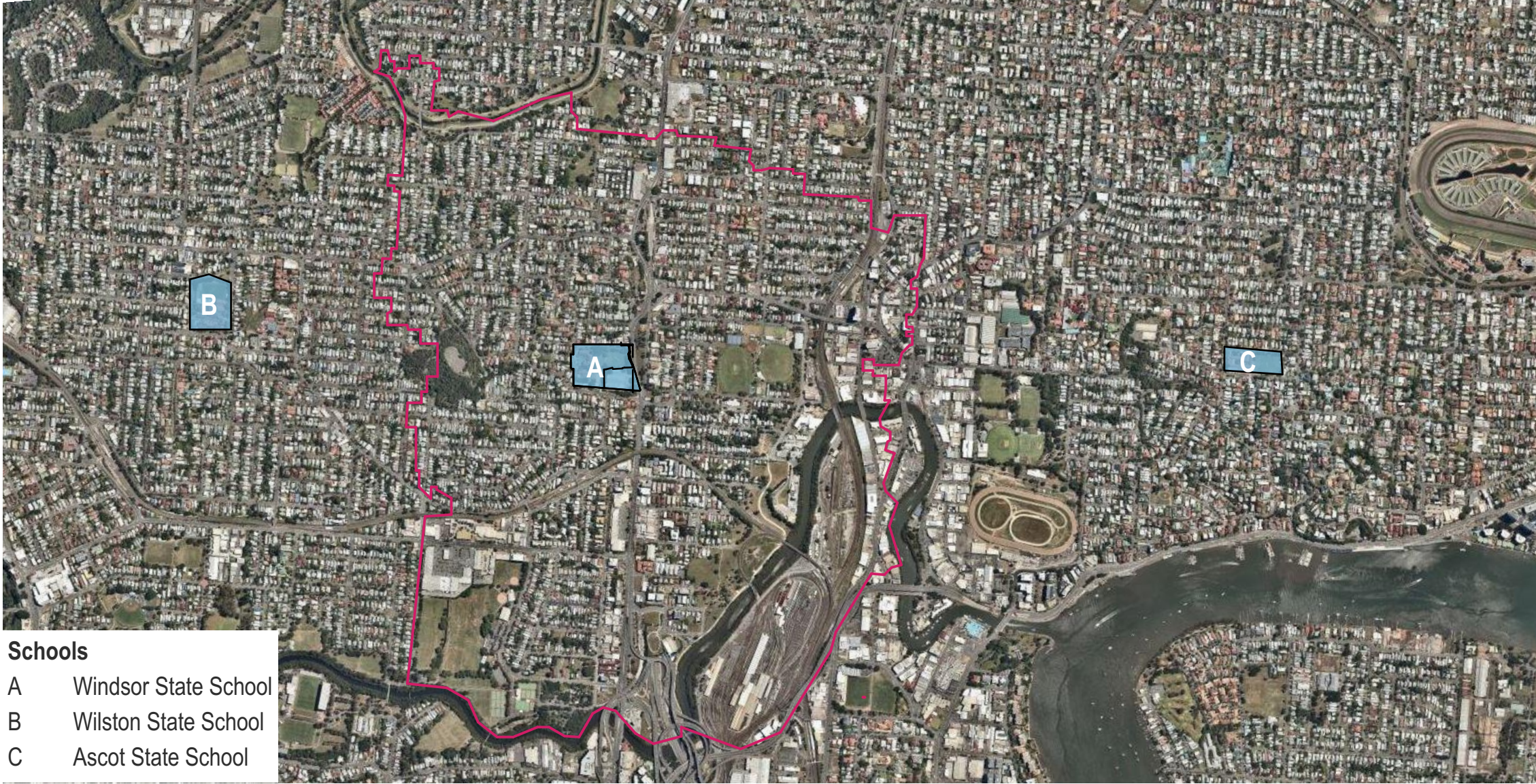
PART A - Master Plan
Harris Lane, Windsor

Drawing Title

Table of Contents

Scale @ A3	Drawn: EA/DZ	Checked: EA
Project Number H2680WIN	Drawing Number SD002	Issue L

1.1 Master Plan
Location and Catchment Plan



Schools	
A	Windsor State School
B	Wilston State School
C	Ascot State School



LOCATION AND CATCHMENT AREA PLAN
1:20000



PART A MASTER PLAN

General Notes
This drawing is Copyright © Any design or drawing is not to be reproduced, either in whole or part, without written permission by Hayes Anderson Lynch Architects Pty. Ltd. Confirm all dimensions on site.
Do not scale off drawings.
All levels are approximate only and are subject to confirmation by licenced surveyor.
All workmanship, materials and construction to comply with the Queensland Building Act 1975, the Queensland Development Code, the Building Code of Australia 2016, Premises Standard and AS1428.1.
Work to be carried out in a neat and appropriate manner.
Where ambiguities or discrepancies exist, Hayes Anderson Lynch Architects Pty. Ltd. shall be contacted for clarification.



22/08/18	L	Sign Off	EA
18/06/18	K	Preliminary Sign Off	EA
18/06/18	J	Preliminary Presentation	EA
14/06/18	H	Preliminary Presentation	EA
13/06/18	G	Preliminary Presentation	EA
08/06/18	F	Preliminary Presentation	EA
06/06/18	E	Preliminary Presentation	EA
05/06/18	D	Preliminary Presentation	EA
01/05/18	C	Preliminary Presentation	EA
25/05/18	B	Preliminary Presentation	EA
23/05/18	A	Preliminary Presentation	EA
Date	Issue	Details	Checked

HAL
HAYES
ANDERSON
LYNCH
ARCHITECTS PTY LTD
ARCHITECTS
TOWN PLANNERS
INTERIOR DESIGNERS

3 / 709 MAIN STREET
KANGAROO POINT QLD 4169
P + 61 7 3 8 5 2 3 1 9 0
E reception@halarchitects.com.au
W www.halarchitects.com.au

Project
PART A - Master Plan
Harris Lane, Windsor

Drawing Title		
Location & Catchment Plan		
Scale @ A3	Drawn:	Checked:
1:20000	EA/DZ	EA
Project Number	Drawing Number	Issue
H2680WIN	SD003	L

2.1 Master Plan
Concept Plan - Colour Palette



2.2 Master Plan
Overlays - Colour Palette



PART A MASTER PLAN

General Notes

This drawing is Copyright © Any design or drawing is not to be reproduced, either in whole or part, without written permission by Hayes Anderson Lynch Architects Pty. Ltd. Confirm all dimensions on site. Do not scale off drawings. All levels are approximate only and are subject to confirmation by licenced surveyor. All workmanship, materials and construction to comply with the Queensland Building Act 1975, the Queensland Development Code, the Building Code of Australia 2016, Premises Standard and AS1428.1. Work to be carried out in a neat and appropriate manner. Where ambiguities or discrepancies exist, Hayes Anderson Lynch Architects Pty. Ltd. shall be contacted for clarification.



22/08/18	L	Sign Off	EA
18/06/18	K	Preliminary Sign Off	EA
18/06/18	J	Preliminary Presentation	EA
14/06/18	H	Preliminary Presentation	EA
13/06/18	G	Preliminary Presentation	EA
08/06/18	F	Preliminary Presentation	EA
06/06/18	E	Preliminary Presentation	EA
05/06/18	D	Preliminary Presentation	EA
01/05/18	C	Preliminary Presentation	EA
25/05/18	B	Preliminary Presentation	EA
23/05/18	A	Preliminary Presentation	EA
Date	Issue	Details	Checked



ARCHITECTS
TOWN PLANNERS
INTERIOR DESIGNERS

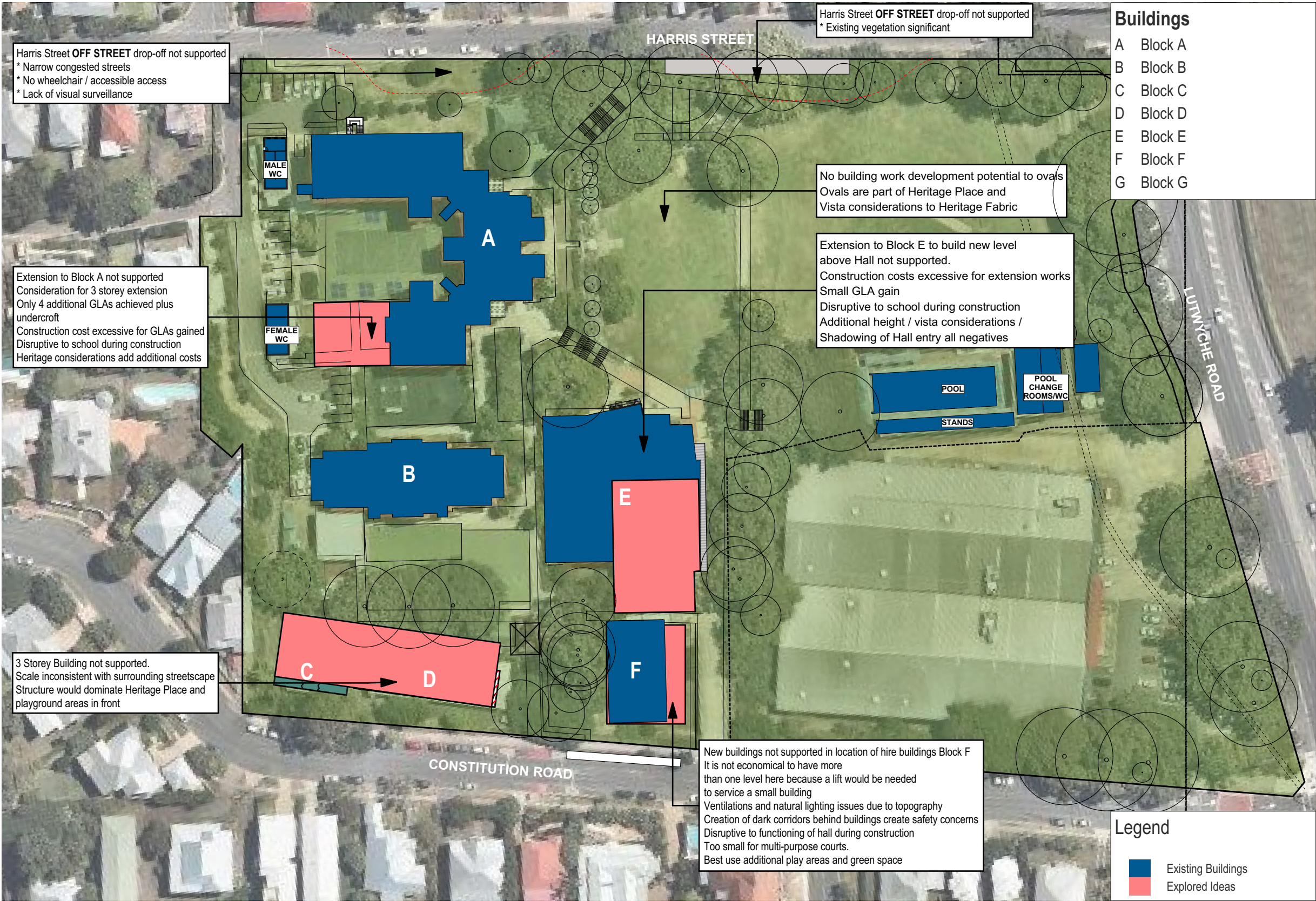
3 / 709 MAIN STREET
KANGAROO POINT QLD 4169

P + 61 7 3 8 5 2 3 1 9 0
E reception@halarchitects.com.au
W www.halarchitects.com.au

Project
PART A - Master Plan
Harris Lane, Windsor

Drawing Title		
Concept Plan & Overlays Colour Palettes		
Scale @ A3	Drawn: EA/DZ	Checked: EA
Project Number	Drawing Number	Issue
H2680WIN	SD004	L

3.1 Master Plan
Ideas Explored



MASTER PLAN - IDEAS EXPLORED
1:1000

PART A MASTER PLAN

General Notes
This drawing is Copyright © Any design or drawing is not to be reproduced, either in whole or part, without written permission by Hayes Anderson Lynch Architects Pty. Ltd. Confirm all dimensions on site.
Do not scale off drawings.
All levels are approximate only and are subject to confirmation by licenced surveyor.
All workmanship, materials and construction to comply with the Queensland Building Act 1975, the Queensland Development Code, the Building Code of Australia 2016, Premises Standard and AS1428.1.
Work to be carried out in a neat and appropriate manner.
Where ambiguities or discrepancies exist, Hayes Anderson Lynch Architects Pty. Ltd. shall be contacted for clarification.



22/08/18	L	Sign Off	EA
18/06/18	K	Preliminary Sign Off	EA
18/06/18	J	Preliminary Presentation	EA
14/06/18	H	Preliminary Presentation	EA
13/06/18	G	Preliminary Presentation	EA
08/06/18	F	Preliminary Presentation	EA
06/06/18	E	Preliminary Presentation	EA
05/06/18	D	Preliminary Presentation	EA
01/05/18	C	Preliminary Presentation	EA
25/05/18	B	Preliminary Presentation	EA
23/05/18	A	Preliminary Presentation	EA
Date	Issue Details	Checked	

HAL
HAYES
ANDERSON
LYNCH
ARCHITECTS PTY LTD

ARCHITECTS
TOWN PLANNERS
INTERIOR DESIGNERS

3 / 709 MAIN STREET
KANGAROO POINT QLD 4169

P + 61 7 3852 3190
E reception@halarchitects.com.au
W www.halarchitects.com.au

Project
PART A - Master Plan
Harris Lane, Windsor

Drawing Title
Ideas Explored

Scale @ A3	Drawn:	Checked:
1:1000	EA/DZ	EA
Project Number	Drawing Number	Issue
H2680WIN	SD005	L

Master Plan
Landscape and Circulation Plan



Buildings

- A Block A
- B Block B
- C Block C
- D Block D
- E Block E
- F Block F
- G Block G
- H Block H

Legend

- Grass
- Gardens / Playgrounds
- Trees
- Pedestrian
- Covered Walkways - Existing
- Covered Walkways - Proposed
- Driveway / Parking
- Existing Transformer

PART A MASTER PLAN

General Notes
This drawing is Copyright © Any design or drawing is not to be reproduced, either in whole or part, without written permission by Hayes Anderson Lynch Architects Pty. Ltd. Confirm all dimensions on site. Do not scale off drawings. All levels are approximate only and are subject to confirmation by licenced surveyor. All workmanship, materials and construction to comply with the Queensland Building Act 1975, the Queensland Development Code, the Building Code of Australia 2016, Premises Standard and AS1428.1. Work to be carried out in a neat and appropriate manner. Where ambiguities or discrepancies exist, Hayes Anderson Lynch Architects Pty. Ltd. shall be contacted for clarification.



22/08/18	L	Sign Off	EA
18/06/18	K	Preliminary Sign Off	EA
18/06/18	J	Preliminary Presentation	EA
14/06/18	H	Preliminary Presentation	EA
13/06/18	G	Preliminary Presentation	EA
08/06/18	F	Preliminary Presentation	EA
06/06/18	E	Preliminary Presentation	EA
05/06/18	D	Preliminary Presentation	EA
01/05/18	C	Preliminary Presentation	EA
25/05/18	B	Preliminary Presentation	EA
23/05/18	A	Preliminary Presentation	EA
Date	Issue	Details	Checked

HAYES ANDERSON LYNCH
ARCHITECTS PTY LTD
ARCHITECTS
TOWN PLANNERS
INTERIOR DESIGNERS
3 / 709 MAIN STREET
KANGAROO POINT QLD 4169
P + 61 7 3852 3190
E reception@halarchitects.com.au
W www.halarchitects.com.au

Project
PART A - Master Plan
Harris Lane, Windsor

MASTER PLAN - LANDSCAPE & CIRCULATION PLAN
1:1000

Drawing Title Landscape & Circulation Plan		
Scale @ A3 1:1000	Drawn: EA/DZ	Checked: EA
Project Number H2680WIN	Drawing Number SD007	Issue L
Printed:- 22/08/2018		

3.4 Master Plan
Heritage Overlay



PART A MASTER PLAN

General Notes

This drawing is Copyright © Any design or drawing is not to be reproduced, either in whole or part, without written permission by Hayes Anderson Lynch Architects Pty. Ltd. Confirm all dimensions on site. Do not scale off drawings.

All levels are approximate only and are subject to confirmation by licenced surveyor.

All workmanship, materials and construction to comply with the Queensland Building Act 1975, the Queensland Development Code, the Building Code of Australia 2016, Premises Standard and AS1428.1. Work to be carried out in a neat and appropriate manner.

Where ambiguities or discrepancies exist, Hayes Anderson Lynch Architects Pty. Ltd. shall be contacted for clarification.



22/08/18	L	Sign Off	EA
18/06/18	K	Preliminary Sign Off	EA
18/06/18	J	Preliminary Presentation	EA
14/06/18	H	Preliminary Presentation	EA
13/06/18	G	Preliminary Presentation	EA
08/06/18	F	Preliminary Presentation	EA
06/06/18	E	Preliminary Presentation	EA
05/06/18	D	Preliminary Presentation	EA
01/05/18	C	Preliminary Presentation	EA
25/05/18	B	Preliminary Presentation	EA
23/05/18	A	Preliminary Presentation	EA
Date	Issue Details	Checked	

HAYES ANDERSON LYNCH
ARCHITECTS PTY LTD
ARCHITECTS
TOWN PLANNERS
INTERIOR DESIGNERS

3 / 709 MAIN STREET
KANGAROO POINT QLD 4169

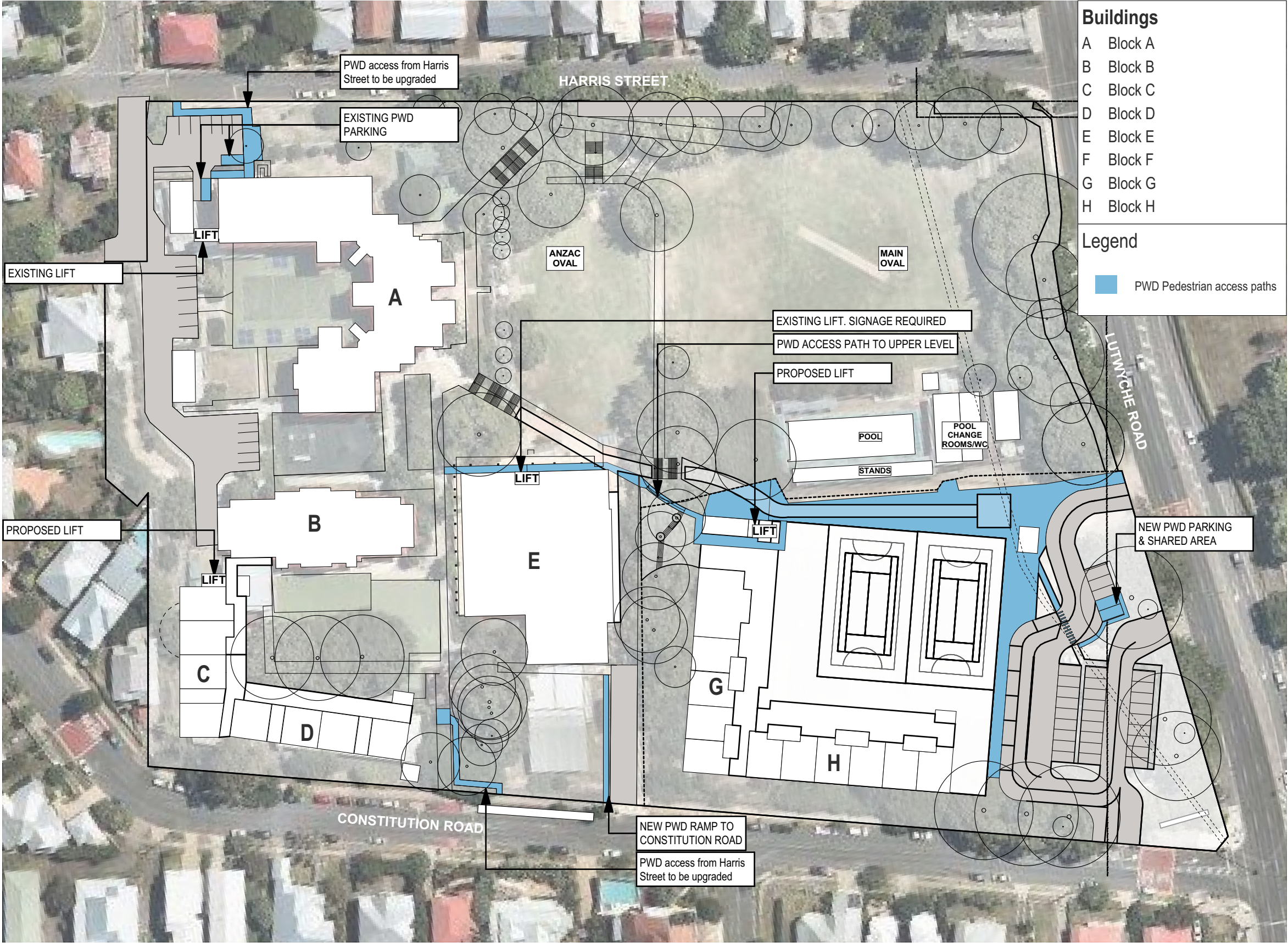
P + 61 7 3852 3190
E reception@halarchitects.com.au
W www.halarchitects.com.au

Project
PART A - Master Plan
Harris Lane, Windsor

Drawing Title
Heritage Overlay

Scale @ A3	Drawn:	Checked:
1:1000	EA/DZ	EA
Project Number	Drawing Number	Issue
H2680WIN	SD008	L

Master Plan
PWD Pedestrian Access Overlay



MASTER PLAN - PWD PEDESTRIAN ACCESS
1:1000

PART A MASTER PLAN

General Notes

This drawing is Copyright © Any design or drawing is not to be reproduced, either in whole or part, without written permission by Hayes Anderson Lynch Architects Pty. Ltd. Confirm all dimensions on site. Do not scale off drawings. All levels are approximate only and are subject to confirmation by licenced surveyor. All workmanship, materials and construction to comply with the Queensland Building Act 1975, the Queensland Development Code, the Building Code of Australia 2016, Premises Standard and AS1428.1. Work to be carried out in a neat and appropriate manner. Where ambiguities or discrepancies exist, Hayes Anderson Lynch Architects Pty. Ltd. shall be contacted for clarification.



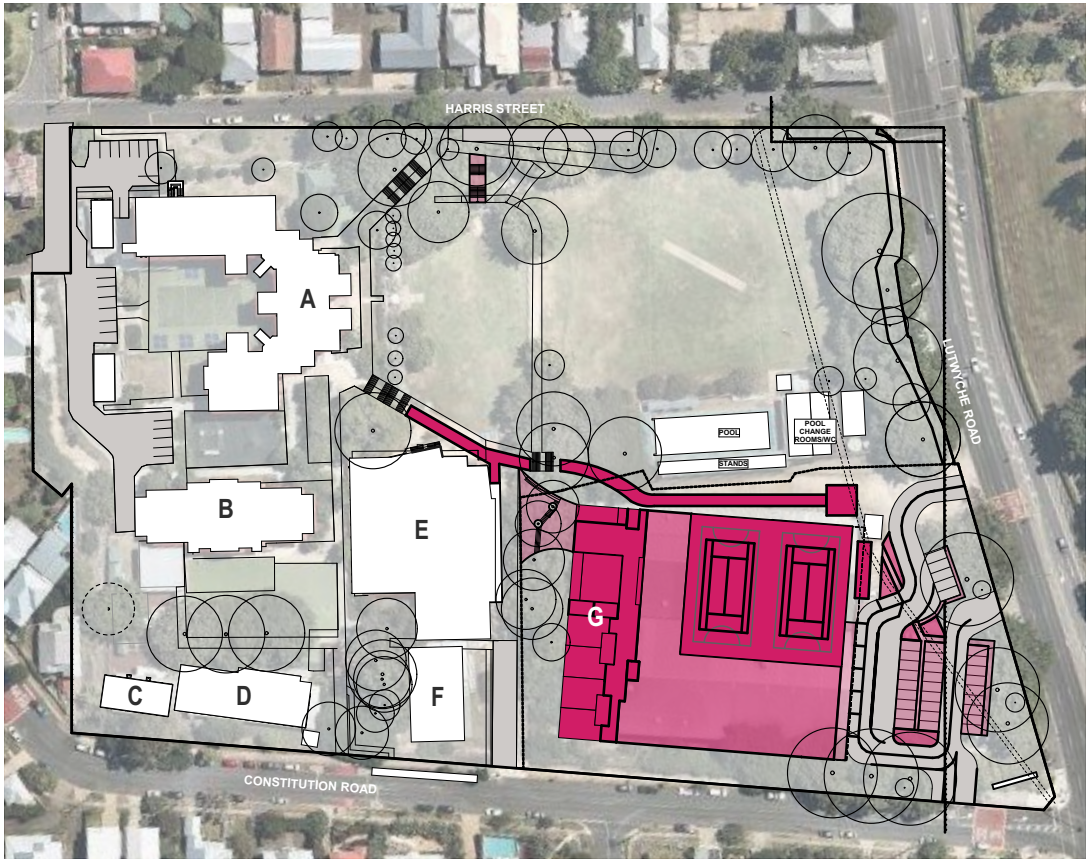
22/08/18	L	Sign Off	EA
18/06/18	K	Preliminary Sign Off	EA
18/06/18	J	Preliminary Presentation	EA
14/06/18	H	Preliminary Presentation	EA
13/06/18	G	Preliminary Presentation	EA
08/06/18	F	Preliminary Presentation	EA
06/06/18	E	Preliminary Presentation	EA
05/06/18	D	Preliminary Presentation	EA
01/05/18	C	Preliminary Presentation	EA
25/05/18	B	Preliminary Presentation	EA
23/05/18	A	Preliminary Presentation	EA
Date	Issue	Details	Checked

HAL
HAYES
ANDERSON
LYNCH
ARCHITECTS PTY LTD
ARCHITECTS
TOWN PLANNERS
INTERIOR DESIGNERS
3 / 709 MAIN STREET
KANGAROO POINT QLD 4169
P + 61 7 3852 3190
E reception@halarchitects.com.au
W www.halarchitects.com.au

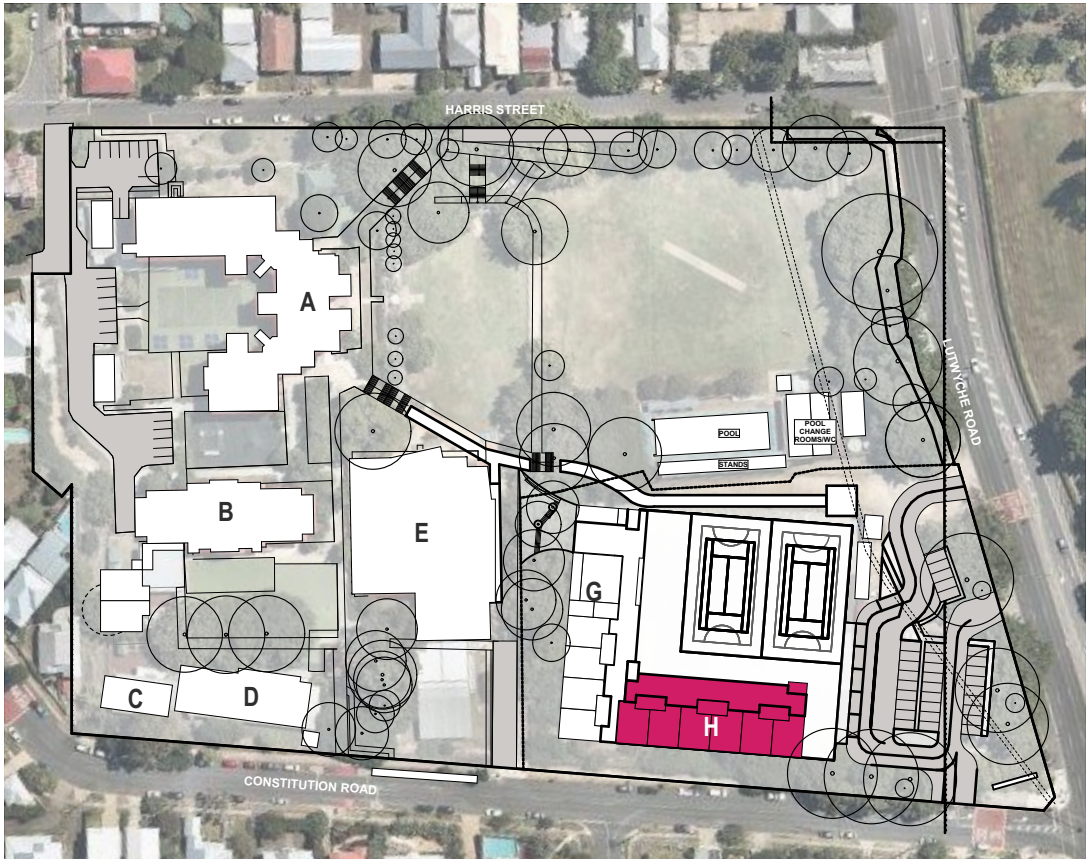
Project
PART A - Master Plan
Harris Lane, Windsor

Drawing Title PWD Pedestrian Access Overlay		
Scale @ A3 1:1000	Drawn: EA/DZ	Checked: EA
Project Number H2680WIN	Drawing Number SD009	Issue L

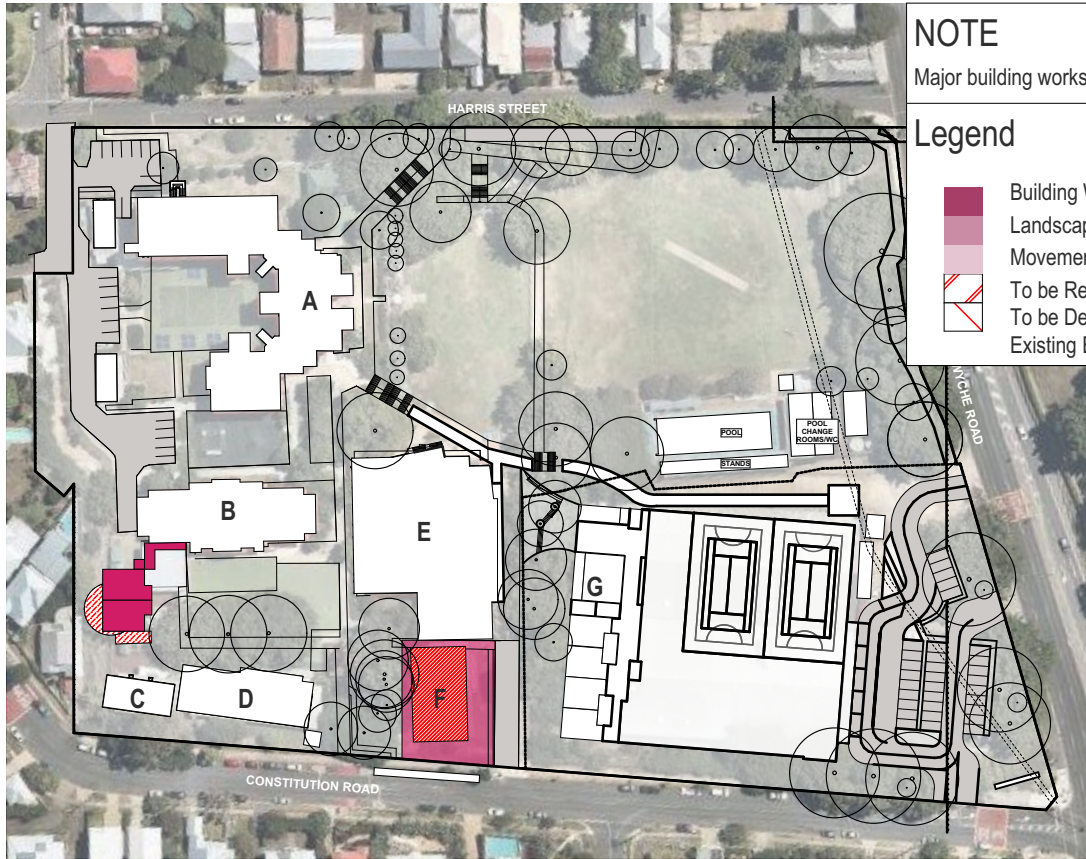
Master Plan
Staging Overlay



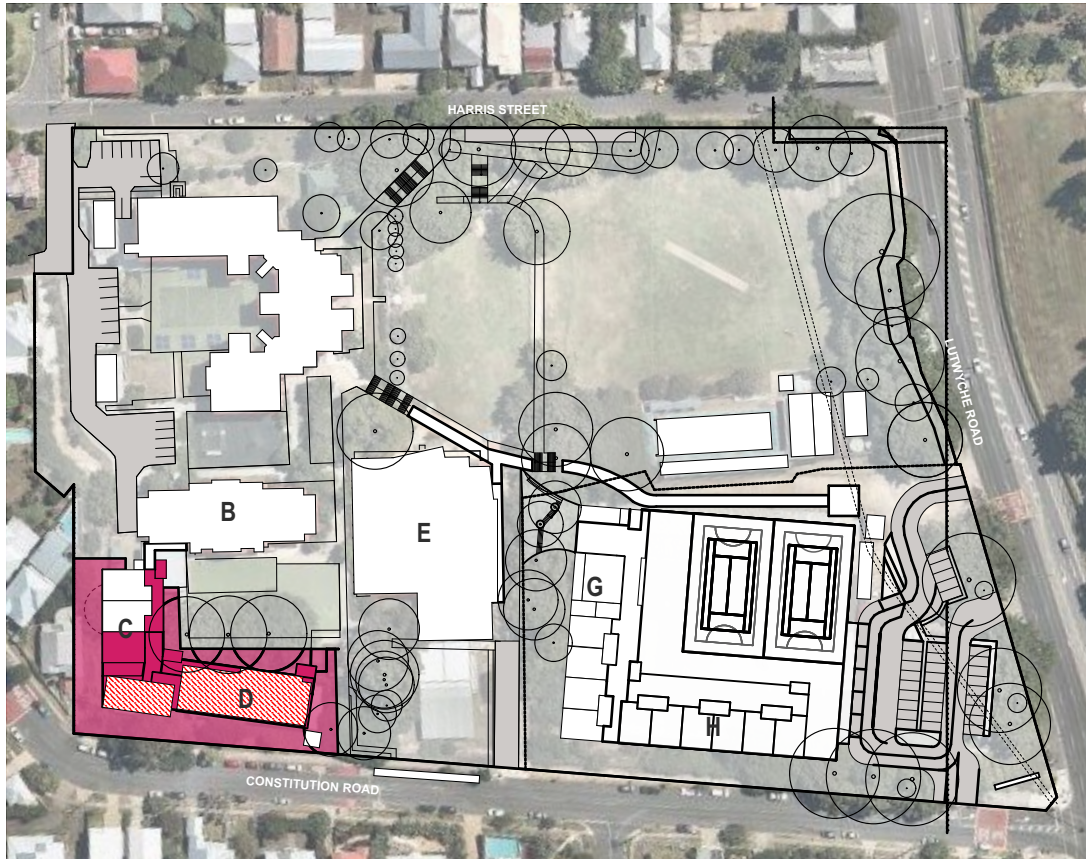
MASTER PLAN - STAGE 1
1:2000



MASTER PLAN - STAGE 3
1:2000



MASTER PLAN - STAGE 2
1:2000



MASTER PLAN - STAGE 4
1:2000

NOTE

Major building works staging only

Legend

- Building Work
- Landscape
- Movement
- To be Removed
- To be Demolished
- Existing Building

PART A MASTER PLAN

General Notes

This drawing is Copyright © Any design or drawing is not to be reproduced, either in whole or part, without written permission by Hayes Anderson Lynch Architects Pty. Ltd. Confirm all dimensions on site. Do not scale off drawings. All levels are approximate only and are subject to confirmation by licenced surveyor. All workmanship, materials and construction to comply with the Queensland Building Act 1975, the Queensland Development Code, the Building Code of Australia 2016, Premises Standard and AS1428.1. Work to be carried out in a neat and appropriate manner. Where ambiguities or discrepancies exist, Hayes Anderson Lynch Architects Pty. Ltd. shall be contacted for clarification.



22/08/18	L	Sign Off	EA
18/06/18	K	Preliminary Sign Off	EA
18/06/18	J	Preliminary Presentation	EA
14/06/18	H	Preliminary Presentation	EA
13/06/18	G	Preliminary Presentation	EA
08/06/18	F	Preliminary Presentation	EA
06/06/18	E	Preliminary Presentation	EA
05/06/18	D	Preliminary Presentation	EA
01/05/18	C	Preliminary Presentation	EA
25/05/18	B	Preliminary Presentation	EA
23/05/18	A	Preliminary Presentation	EA
Date	Issue Details	Checked	

**HAYES
ANDERSON
LYNCH**
ARCHITECTS PTY LTD

ARCHITECTS
TOWN PLANNERS
INTERIOR DESIGNERS

3 / 709 MAIN STREET
KANGAROO POINT QLD 4169

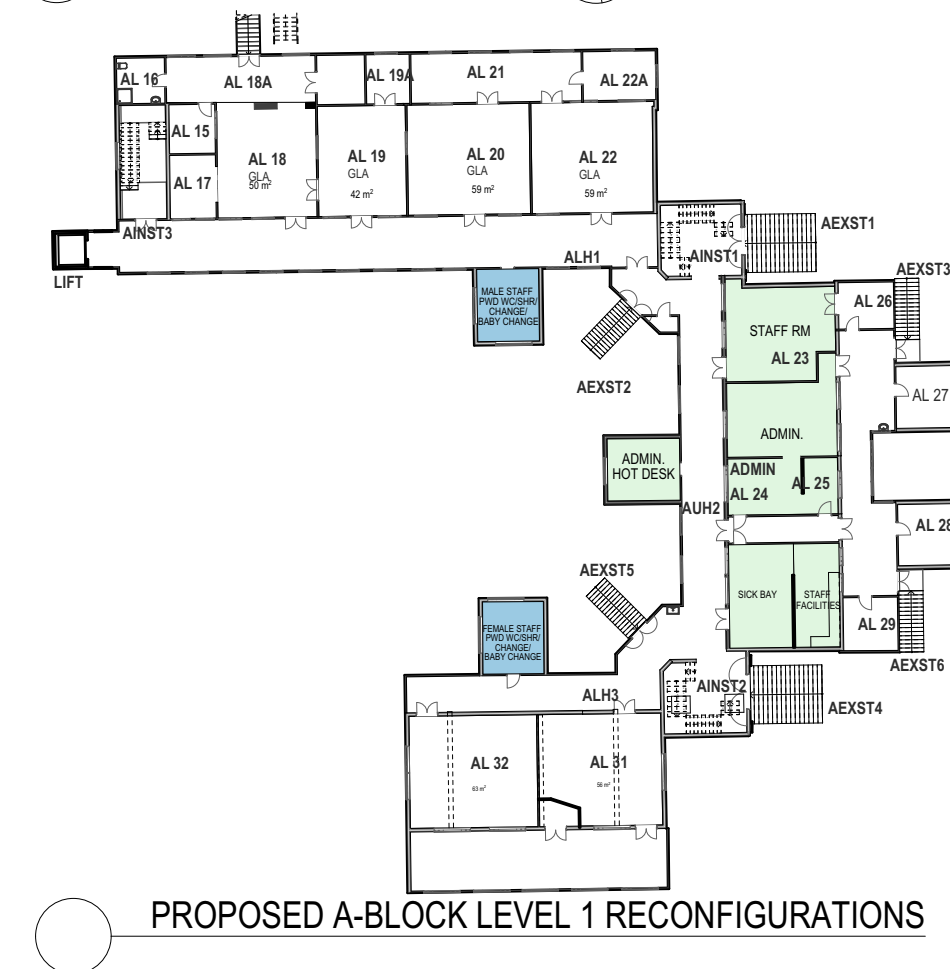
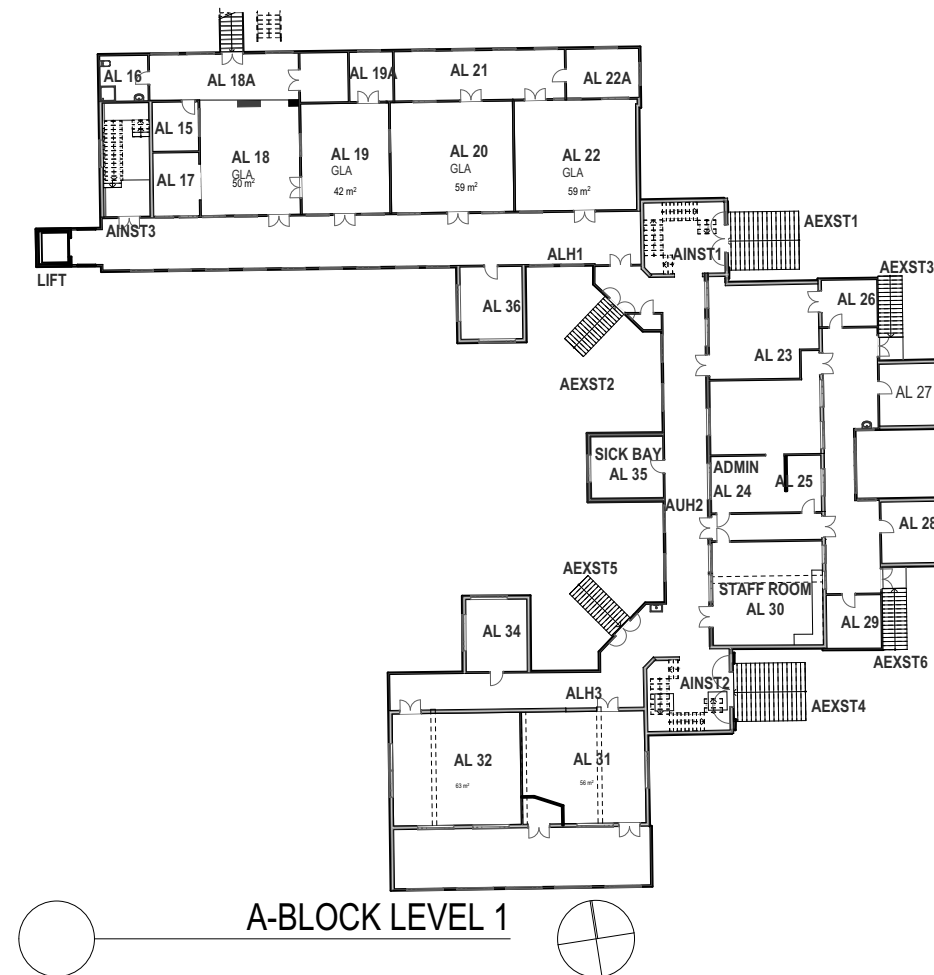
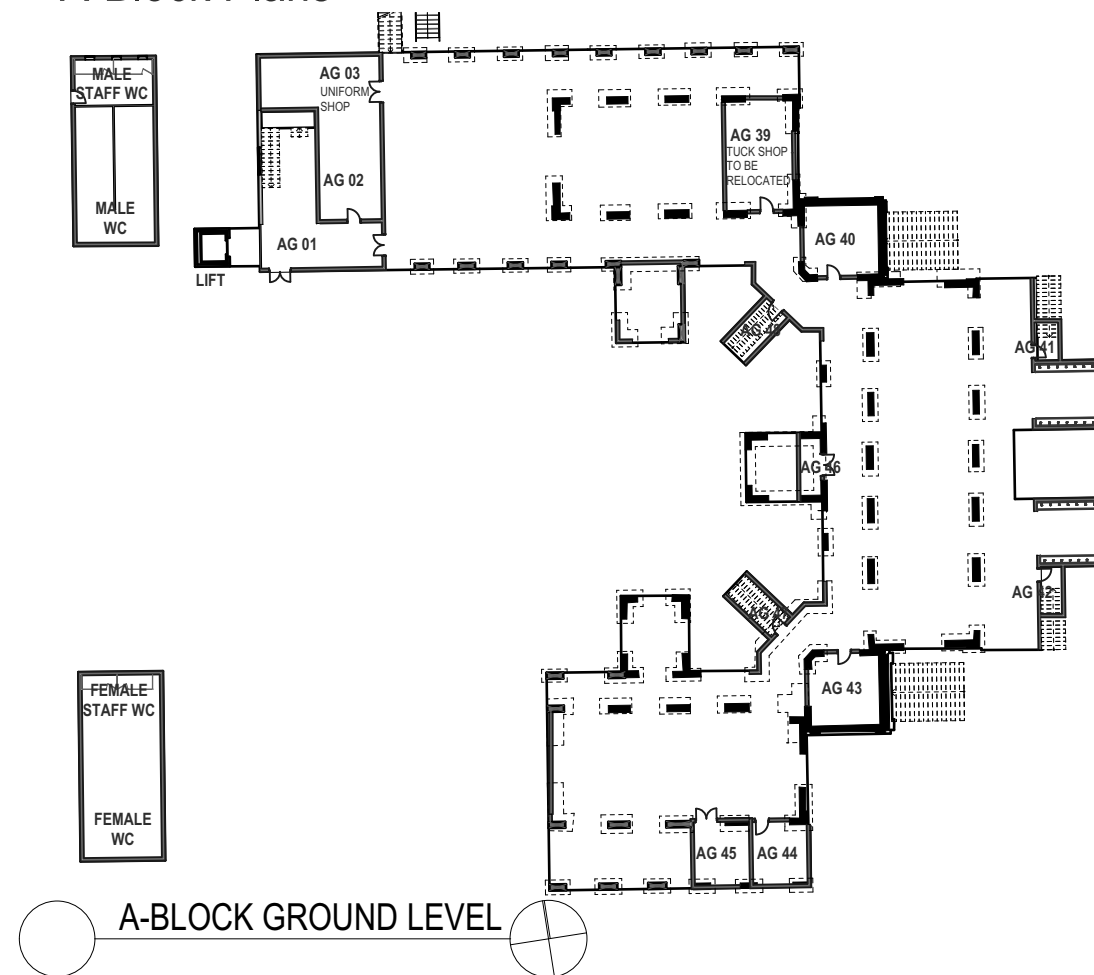
P + 61 7 3852 3190
E reception@halarchitects.com.au
W www.halarchitects.com.au

Project
PART A - Master Plan
Harris Lane, Windsor

Drawing Title
Staging Overlay

Scale @ A3	Drawn:	Checked:
1:2000	EA/DZ	EA
Project Number	Drawing Number	Issue
H2680WIN	SD010	L

Master Plan A-Block Plans



PART A MASTER PLAN

General Notes

This drawing is Copyright © Any design or drawing is not to be reproduced, either in whole or part, without written permission by Hayes Anderson Lynch Architects Pty. Ltd. Confirm all dimensions on site. Do not scale off drawings.

Do not scale off drawings.
All levels are approximate only and are
subject to confirmation by licenced
surveyor.

All workmanship, materials and construction to comply with the Queensland Building Act 1975, the Queensland Development Code, the Building Code of Australia 2016, Premises Standard and AS1428.1

Premises Standard and AS 1428.1.
Work to be carried out in a neat and appropriate manner.

Where ambiguities or discrepancies exist, Hayes Anderson Lynch Architects Pty. Ltd. shall be contacted for clarification.



22/08/18	L	Sign Off	EA
18/06/18	K	Preliminary Sign Off	EA
18/06/18	J	Preliminary Presentation	EA
14/06/18	H	Preliminary Presentation	EA
13/06/18	G	Preliminary Presentation	EA
08/06/18	F	Preliminary Presentation	EA
06/06/18	E	Preliminary Presentation	EA
05/06/18	D	Preliminary Presentation	EA
01/05/18	C	Preliminary Presentation	EA
25/05/18	B	Preliminary Presentation	EA
23/05/18	A	Preliminary Presentation	EA
Date	Issue	Details	Checked



ARCHITECTS
TOWN PLANNERS
INTERIOR DESIGNERS

3 / 709 MAIN STREET
KANGAROO POINT QLD 4169

P + 61 7 3852 3190

E reception@halarchitects.com.au

W www.halarchitects.com.au

Project

PART A - Master Plan

Harris Lane, Windsor

Drawing Title

A Block Plans

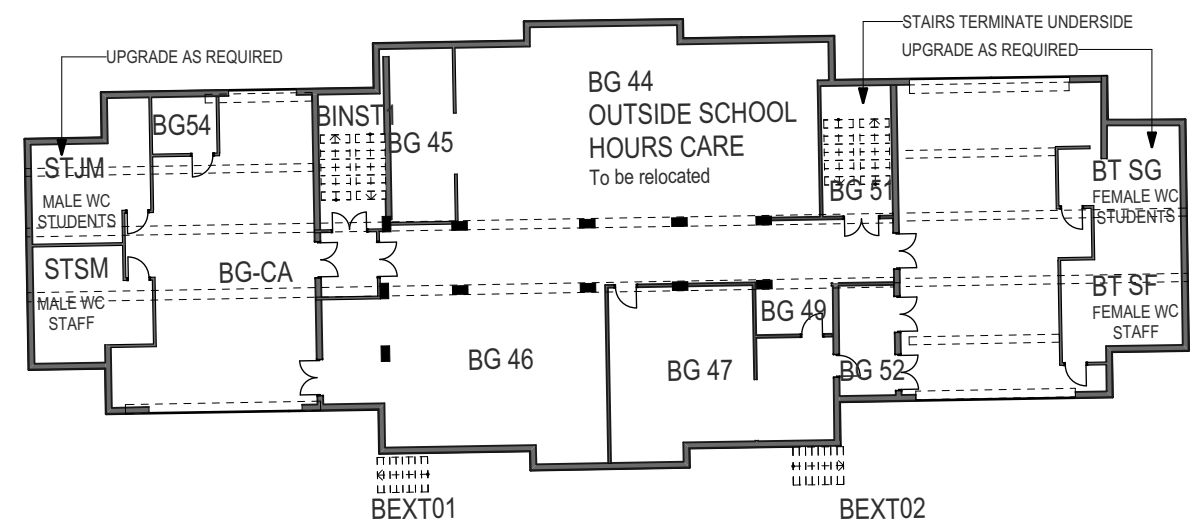
Scale @ A3 Drawn: Checked:

1:500	EA/DZ	EA
-------	-------	----

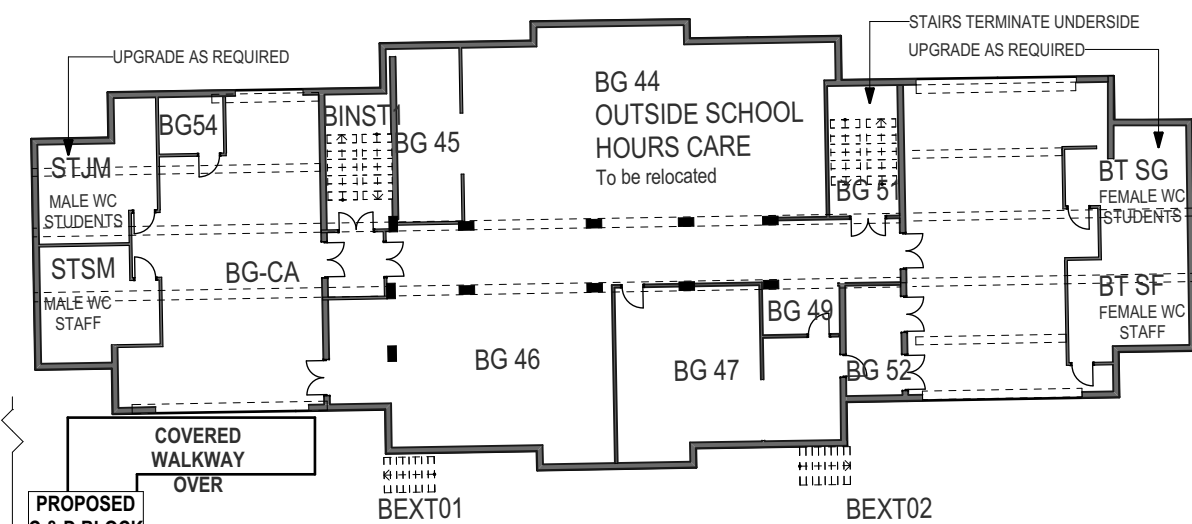
Project Number	Drawing Number	Issue
----------------	----------------	-------

Printed:- 22/08/2018

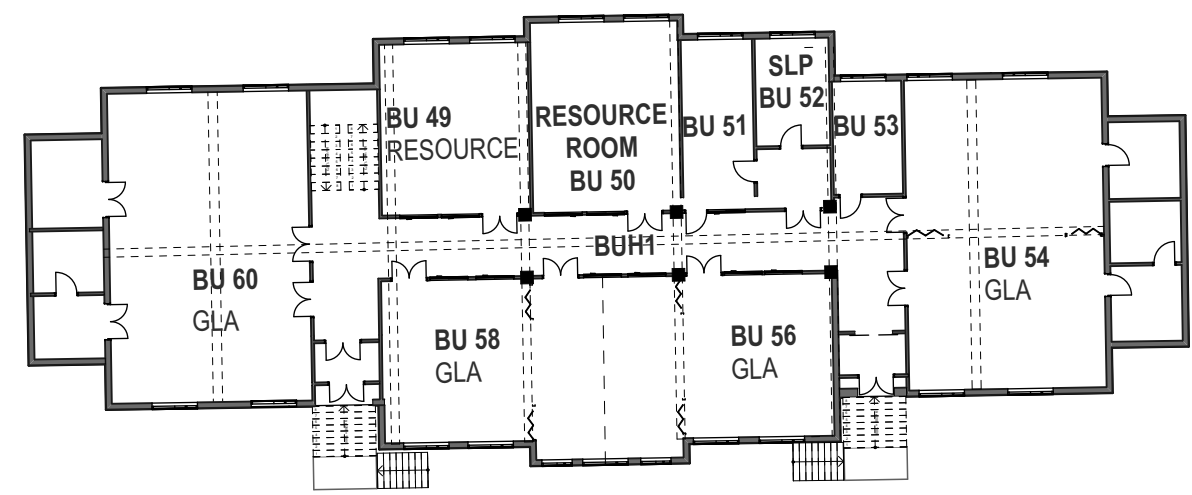
4.2 Master Plan
B-Block Plans



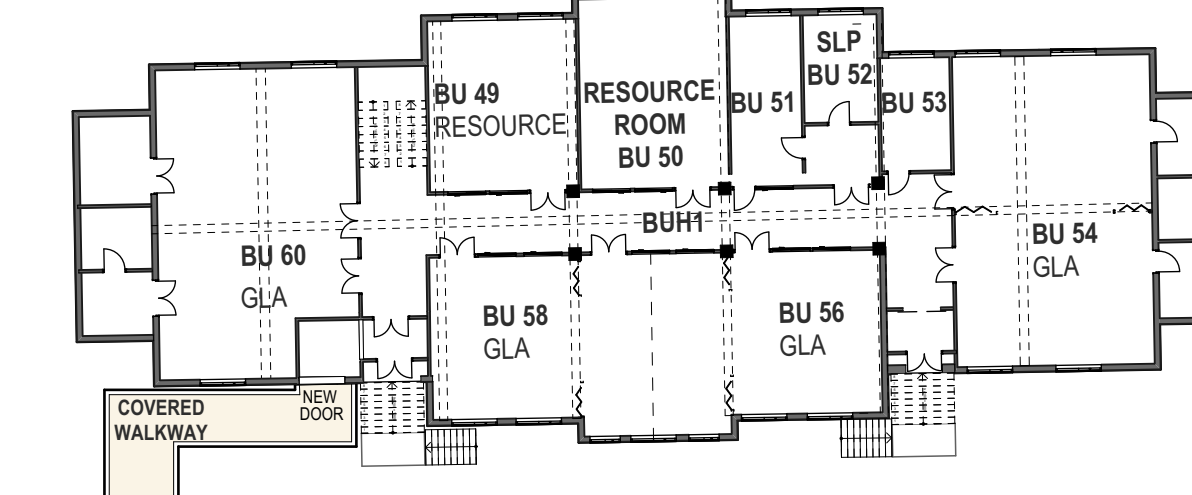
B-BLOCK GROUND LEVEL



PROPOSED B-BLOCK GROUND LEVEL RECONFIGURATIONS



B-BLOCK UPPER LEVEL



PROPOSED B-BLOCK UPPER LEVEL RECONFIGURATIONS

PART A MASTER PLAN

General Notes

This drawing is Copyright © Any design or drawing is not to be reproduced, either in whole or part, without written permission by Hayes Anderson Lynch Architects Pty. Ltd. Confirm all dimensions on site.

Do not scale off drawings.

All levels are approximate only and are subject to confirmation by licenced surveyor.

All workmanship, materials and construction to comply with the Queensland Building Act 1975, the Queensland Development Code, the Building Code of Australia 2016, Premises Standard and AS1428.1. Work to be carried out in a neat and appropriate manner.

Where ambiguities or discrepancies exist, Hayes Anderson Lynch Architects Pty. Ltd. shall be contacted for clarification.



22/08/18	L	Sign Off	EA
18/06/18	K	Preliminary Sign Off	EA
18/06/18	J	Preliminary Presentation	EA
14/06/18	H	Preliminary Presentation	EA
13/06/18	G	Preliminary Presentation	EA
08/06/18	F	Preliminary Presentation	EA
06/06/18	E	Preliminary Presentation	EA
05/06/18	D	Preliminary Presentation	EA
01/05/18	C	Preliminary Presentation	EA
25/05/18	B	Preliminary Presentation	EA
23/05/18	A	Preliminary Presentation	EA
Date	Issue	Details	Checked



ARCHITECTS
TOWN PLANNERS
INTERIOR DESIGNERS

3 / 709 MAIN STREET
KANGAROO POINT QLD 4169

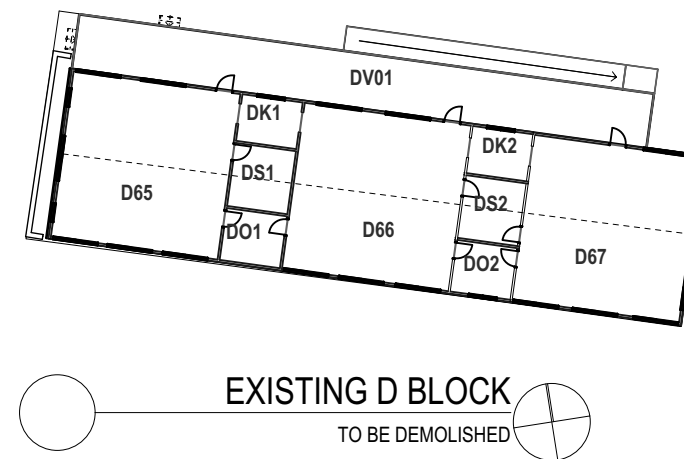
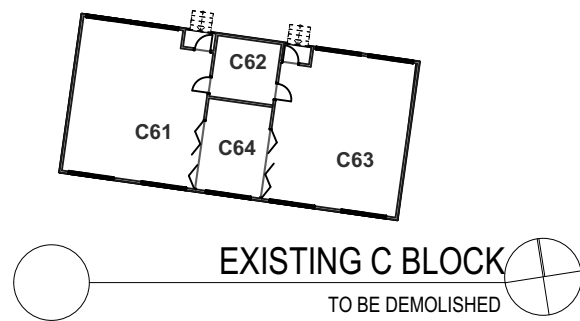
P + 61 7 3852 3190
E reception@halarchitects.com.au
W www.halarchitects.com.au

Project
PART A - Master Plan
Harris Lane, Windsor

Drawing Title
B Block Plans

Scale @ A3	Drawn:	Checked:
1:300	EA/DZ	EA
Project Number	Drawing Number	Issue
H2680WIN	SD012	L

4.3 Master Plan
C & D-Block Plans



PART A MASTER PLAN

General Notes

This drawing is Copyright © Any design or drawing is not to be reproduced, either in whole or part, without written permission by Hayes Anderson Lynch Architects Pty. Ltd. Confirm all dimensions on site. Do not scale off drawings. All levels are approximate only and are subject to confirmation by licenced surveyor. All workmanship, materials and construction to comply with the Queensland Building Act 1975, the Queensland Development Code, the Building Code of Australia 2016, Premises Standard and AS1428.1. Work to be carried out in a neat and appropriate manner. Where ambiguities or discrepancies exist, Hayes Anderson Lynch Architects Pty. Ltd. shall be contacted for clarification.



22/08/18	L	Sign Off	EA
18/06/18	K	Preliminary Sign Off	EA
18/06/18	J	Preliminary Presentation	EA
14/06/18	H	Preliminary Presentation	EA
13/06/18	G	Preliminary Presentation	EA
08/06/18	F	Preliminary Presentation	EA
06/06/18	E	Preliminary Presentation	EA
05/06/18	D	Preliminary Presentation	EA
01/05/18	C	Preliminary Presentation	EA
25/05/18	B	Preliminary Presentation	EA
23/05/18	A	Preliminary Presentation	EA

Date Issue Details Checked

HAYES ANDERSON LYNCH
ARCHITECTS PTY LTD
ARCHITECTS
TOWN PLANNERS
INTERIOR DESIGNERS

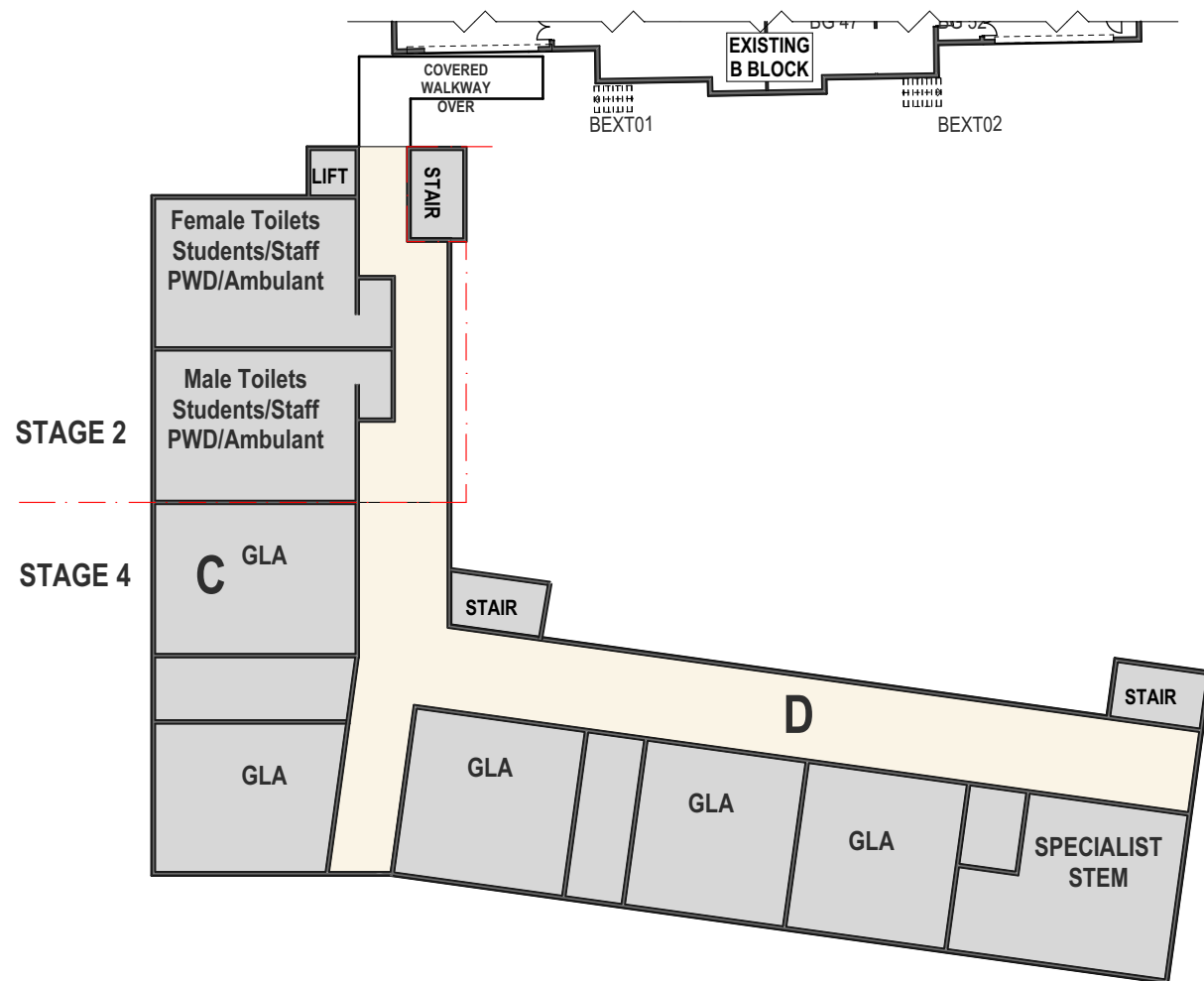
3 / 709 MAIN STREET
KANGAROO POINT QLD 4169

P + 61 7 3852 3190
E reception@halarchitects.com.au
W www.halarchitects.com.au

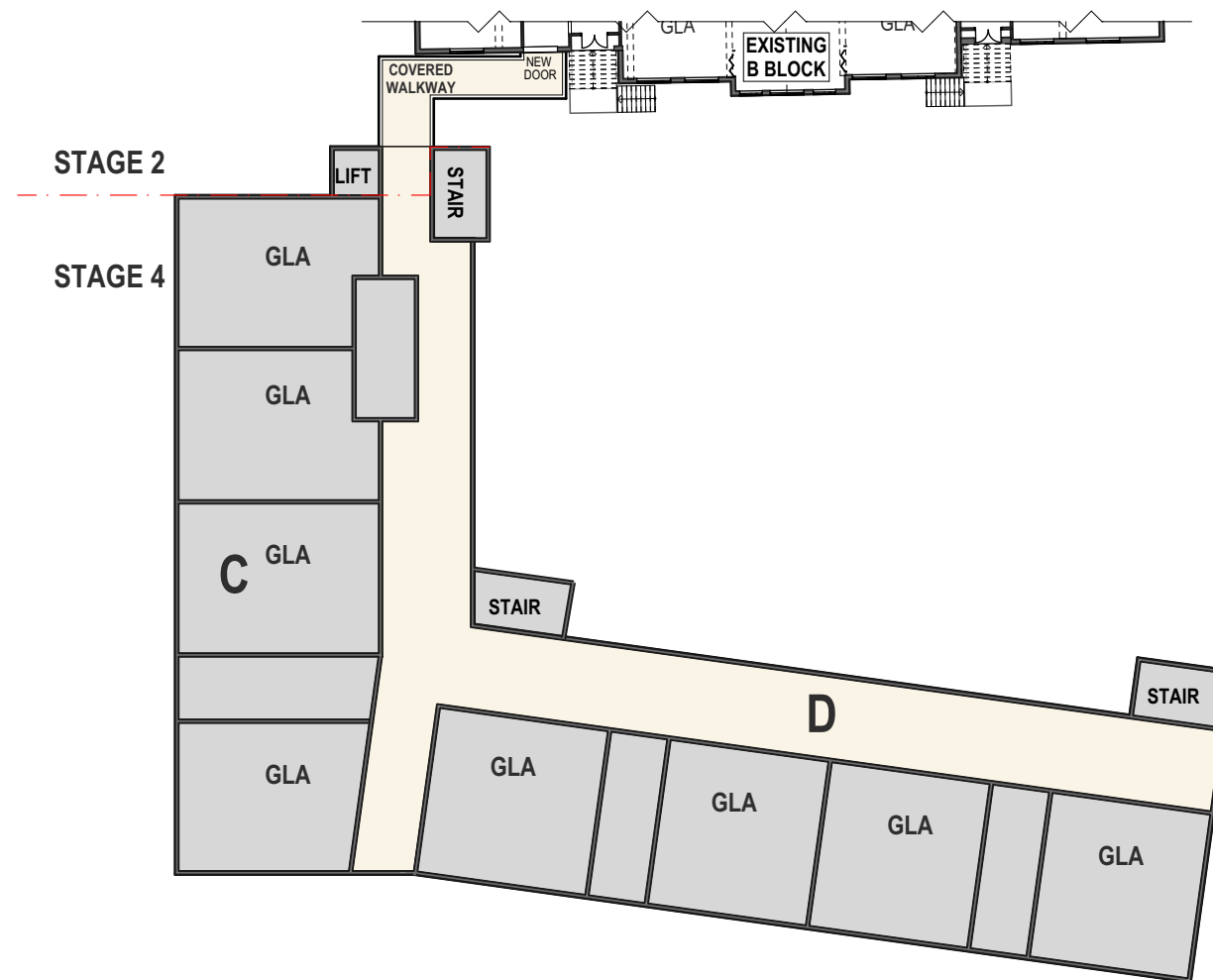
Project
PART A - Master Plan
Harris Lane, Windsor

Drawing Title
C & D Block Plans

Scale @ A3	Drawn:	Checked:
1:400	EA/DZ	EA
Project Number	Drawing Number	Issue
H2680WIN	SD013	L

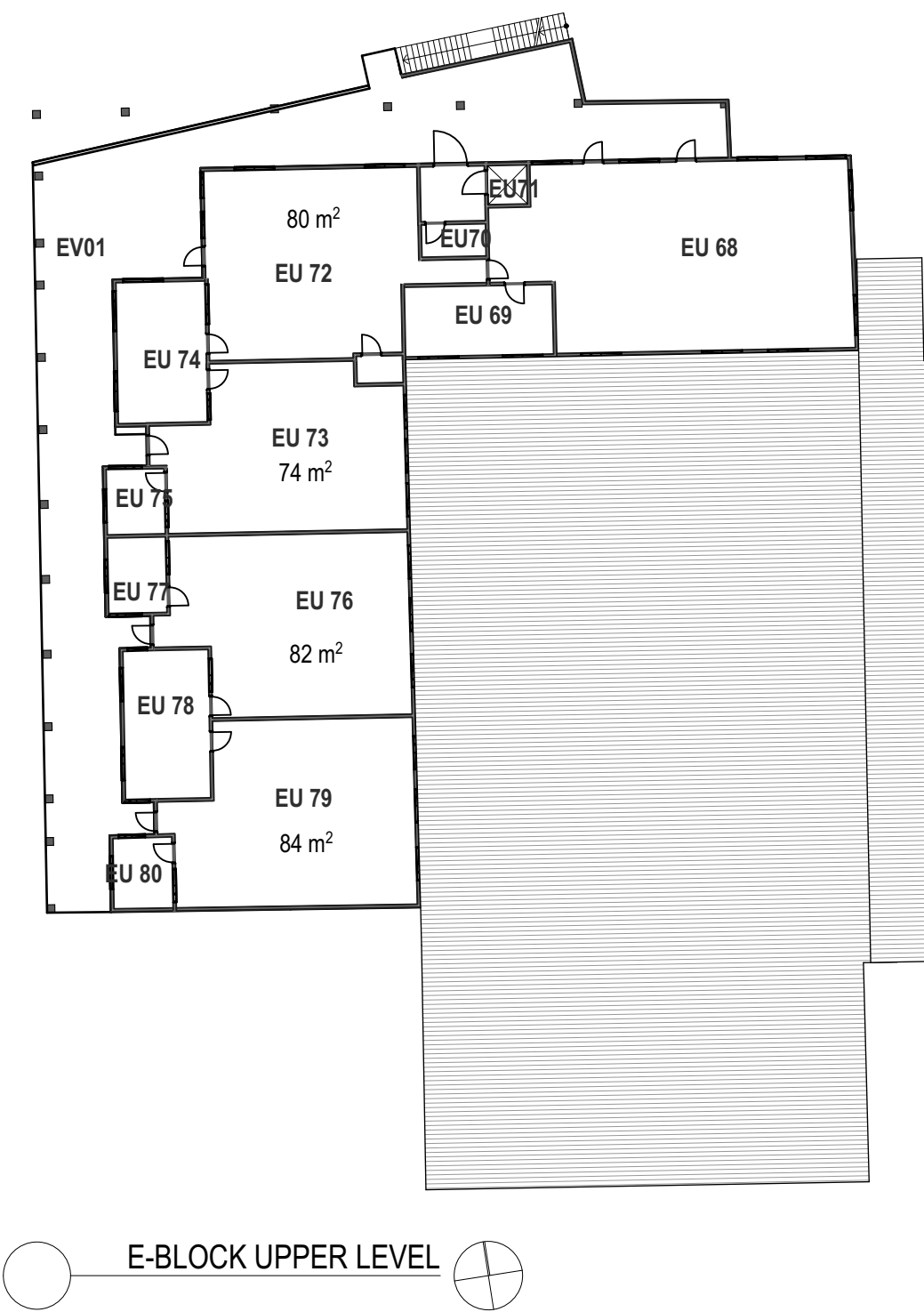
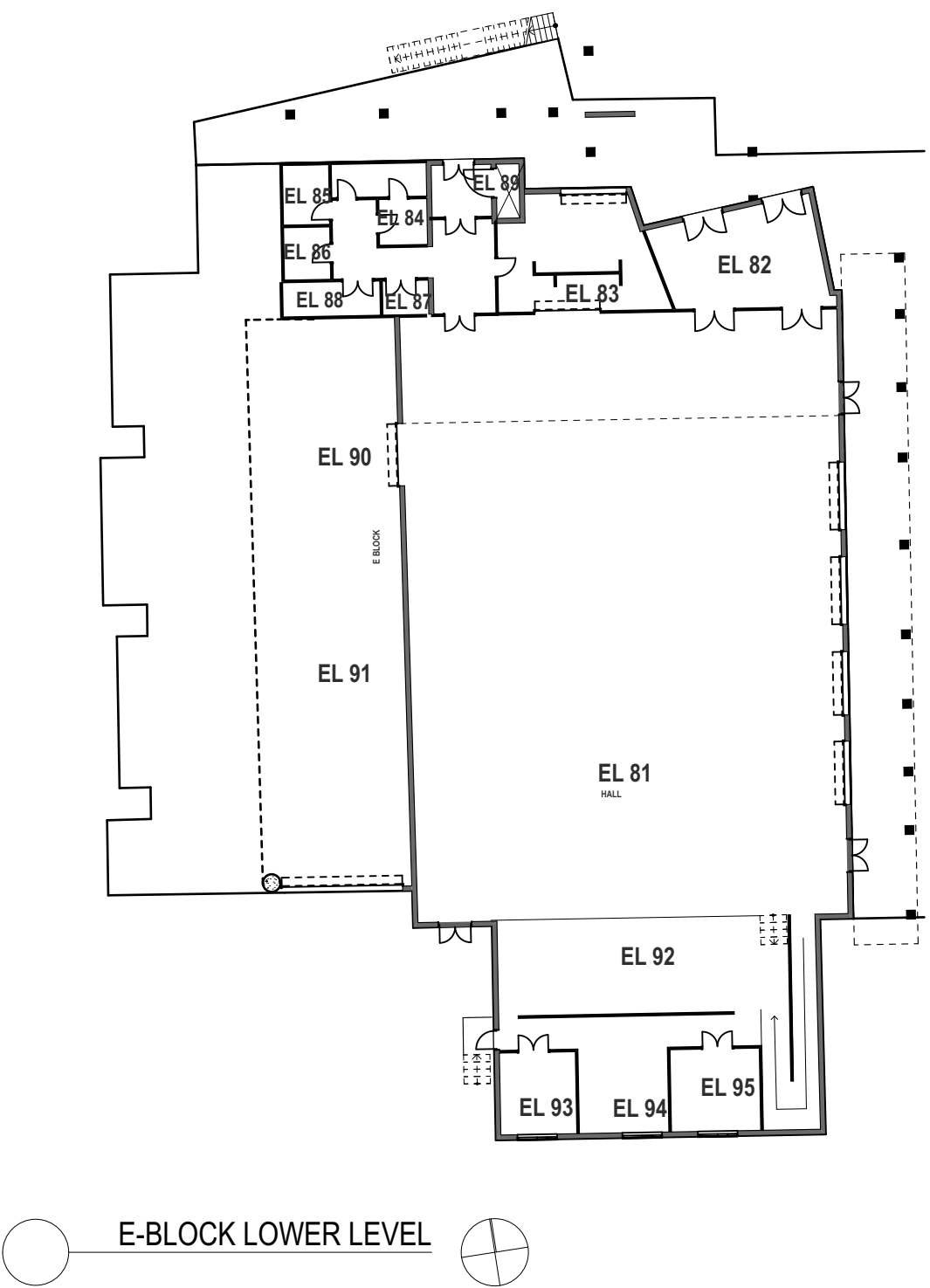


PROPOSED C & D BLOCK - GROUND FLOOR



PROPOSED C & D BLOCK - LEVEL 1

4.4 Master Plan
E-Block Plans



PART A MASTER PLAN

General Notes
This drawing is Copyright © Any design or drawing is not to be reproduced, either in whole or part, without written permission by Hayes Anderson Lynch Architects Pty. Ltd. Confirm all dimensions on site.
Do not scale off drawings.
All levels are approximate only and are subject to confirmation by licenced surveyor.
All workmanship, materials and construction to comply with the Queensland Building Act 1975, the Queensland Development Code, the Building Code of Australia 2016, Premises Standard and AS1428.1.
Work to be carried out in a neat and appropriate manner.
Where ambiguities or discrepancies exist, Hayes Anderson Lynch Architects Pty. Ltd. shall be contacted for clarification.



22/08/18	L	Sign Off	EA
18/06/18	K	Preliminary Sign Off	EA
18/06/18	J	Preliminary Presentation	EA
14/06/18	H	Preliminary Presentation	EA
13/06/18	G	Preliminary Presentation	EA
08/06/18	F	Preliminary Presentation	EA
06/06/18	E	Preliminary Presentation	EA
05/06/18	D	Preliminary Presentation	EA
01/05/18	C	Preliminary Presentation	EA
25/05/18	B	Preliminary Presentation	EA
23/05/18	A	Preliminary Presentation	EA
Date	Issue	Details	Checked



ARCHITECTS
TOWN PLANNERS
INTERIOR DESIGNERS

3 / 709 MAIN STREET
KANGAROO POINT QLD 4169

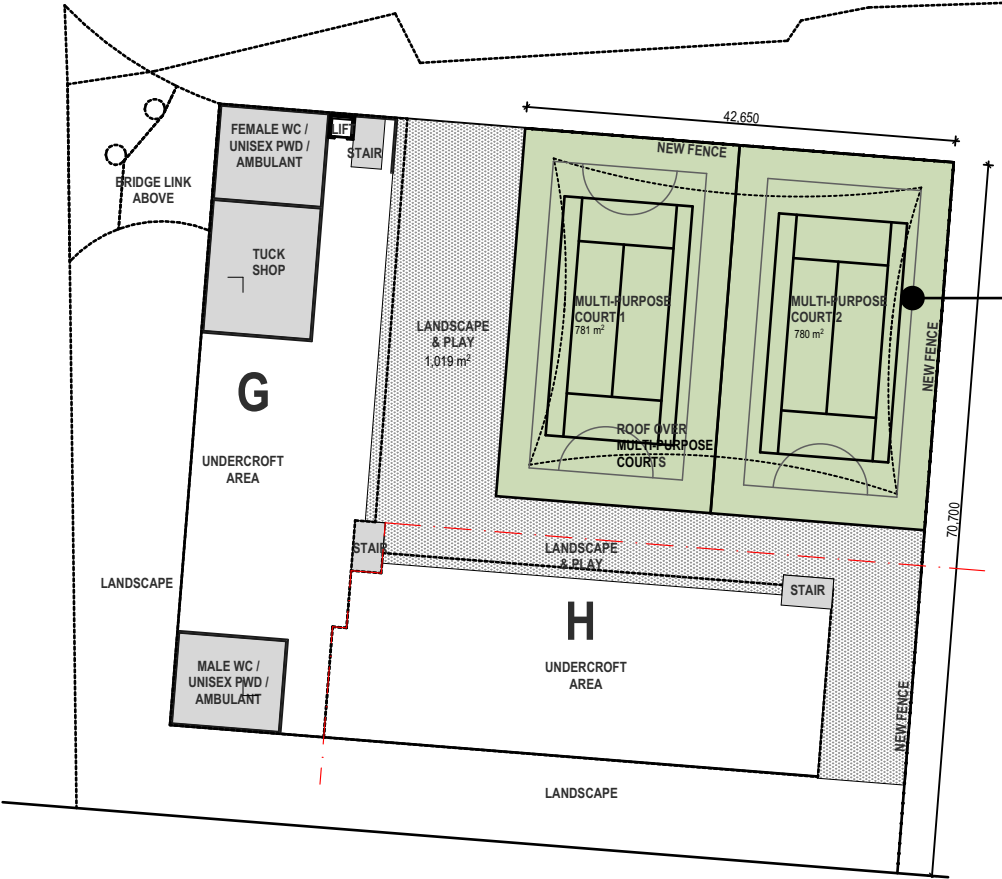
P + 61 7 3852 3190
E reception@halarchitects.com.au
W www.halarchitects.com.au

Project
PART A - Master Plan
Harris Lane, Windsor

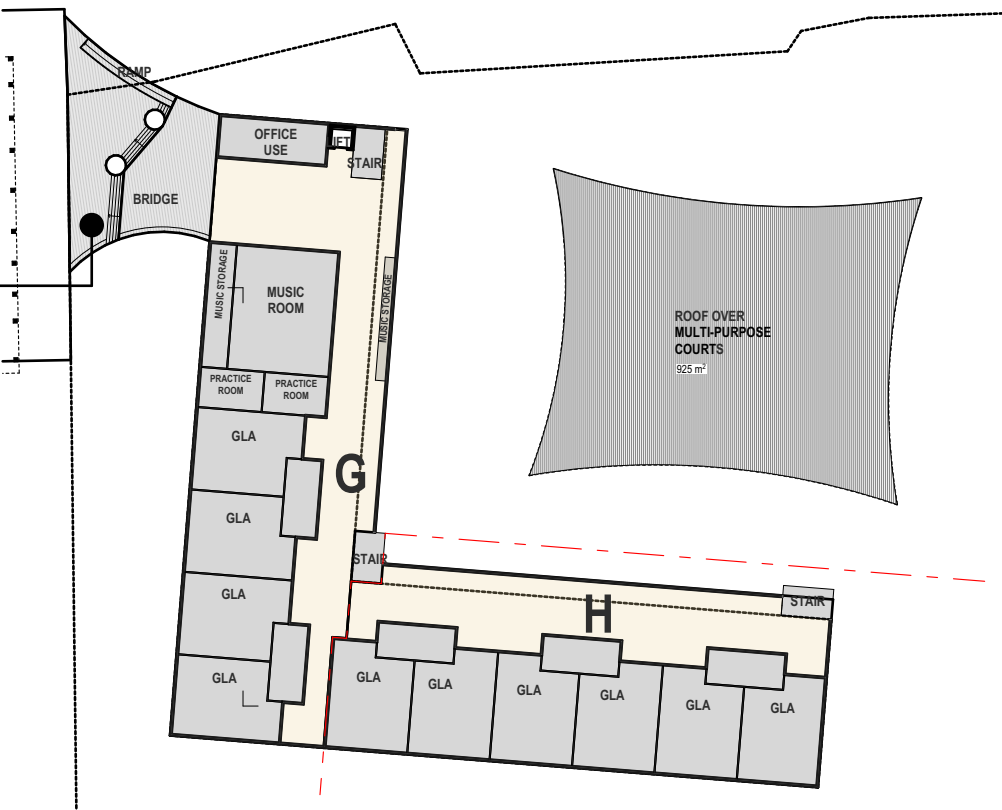
Drawing Title
E Block Plans

Scale @ A3	Drawn:	Checked:
1:300	EA/DZ	EA
Project Number	Drawing Number	Issue
H2680WIN	SD014	L

4.5 Master Plan
Proposed G-Block Plans



PROPOSED BLOCK G & H - GROUND LEVEL



PROPOSED BLOCK G & H - LEVEL 1



SOME TIMBER FEATURES.
TIMBER USE TO BE MINIMISED TO
SEATING ONLY.

PART A MASTER PLAN

General Notes
This drawing is Copyright © Any design or drawing is not to be reproduced, either in whole or part, without written permission by Hayes Anderson Lynch Architects Pty. Ltd. Confirm all dimensions on site. Do not scale off drawings.
All levels are approximate only and are subject to confirmation by licenced surveyor.
All workmanship, materials and construction to comply with the Queensland Building Act 1975, the Queensland Development Code, the Building Code of Australia 2016, Premises Standard and AS1428.1. Work to be carried out in a neat and appropriate manner.
Where ambiguities or discrepancies exist, Hayes Anderson Lynch Architects Pty. Ltd. shall be contacted for clarification.



22/08/18	L	Sign Off	EA
18/06/18	K	Preliminary Sign Off	EA
18/06/18	J	Preliminary Presentation	EA
14/06/18	H	Preliminary Presentation	EA
13/06/18	G	Preliminary Presentation	EA
08/06/18	F	Preliminary Presentation	EA
06/06/18	E	Preliminary Presentation	EA
05/06/18	D	Preliminary Presentation	EA
01/05/18	C	Preliminary Presentation	EA
25/05/18	B	Preliminary Presentation	EA
23/05/18	A	Preliminary Presentation	EA
Date	Issue	Details	Checked



ARCHITECTS
TOWN PLANNERS
INTERIOR DESIGNERS

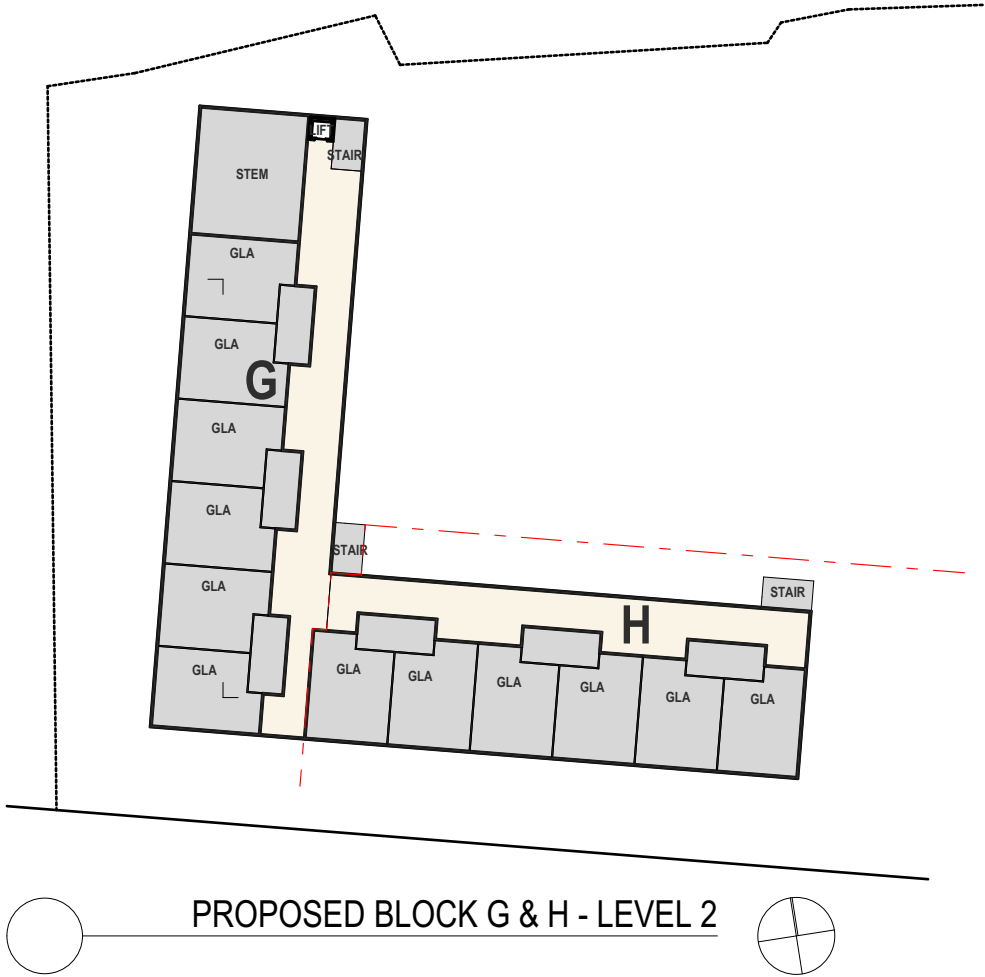
3 / 709 MAIN STREET
KANGAROO POINT QLD 4169

P + 61 7 3852 3190
E reception@halarchitects.com.au
W www.halarchitects.com.au

Project
PART A - Master Plan
Harris Lane, Windsor

Drawing Title	Proposed G & H Block Ground & Level 1 Plans		
Scale @ A3	Drawn:	Checked:	
1:750	EA/DZ	EA	
Project Number	Drawing Number	Issue	
H2680WIN	SD015	L	

4.6 Master Plan
Proposed G-Block Plans



PART A MASTER PLAN

General Notes

This drawing is Copyright © Any design or drawing is not to be reproduced, either in whole or part, without written permission by Hayes Anderson Lynch Architects Pty. Ltd. Confirm all dimensions on site. Do not scale off drawings. All levels are approximate only and are subject to confirmation by licenced surveyor. All workmanship, materials and construction to comply with the Queensland Building Act 1975, the Queensland Development Code, the Building Code of Australia 2016, Premises Standard and AS1428.1. Work to be carried out in a neat and appropriate manner. Where ambiguities or discrepancies exist, Hayes Anderson Lynch Architects Pty. Ltd. shall be contacted for clarification.



22/08/18	L	Sign Off	EA
18/06/18	K	Preliminary Sign Off	EA
18/06/18	J	Preliminary Presentation	EA
14/06/18	H	Preliminary Presentation	EA
13/06/18	G	Preliminary Presentation	EA
08/06/18	F	Preliminary Presentation	EA
06/06/18	E	Preliminary Presentation	EA
05/06/18	D	Preliminary Presentation	EA
01/05/18	C	Preliminary Presentation	EA
25/05/18	B	Preliminary Presentation	EA
23/05/18	A	Preliminary Presentation	EA
Date	Issue	Details	Checked



ARCHITECTS
TOWN PLANNERS
INTERIOR DESIGNERS

3 / 709 MAIN STREET
KANGAROO POINT QLD 4169

P + 61 7 3852 3190
E reception@halarchitects.com.au
W www.halarchitects.com.au

Project

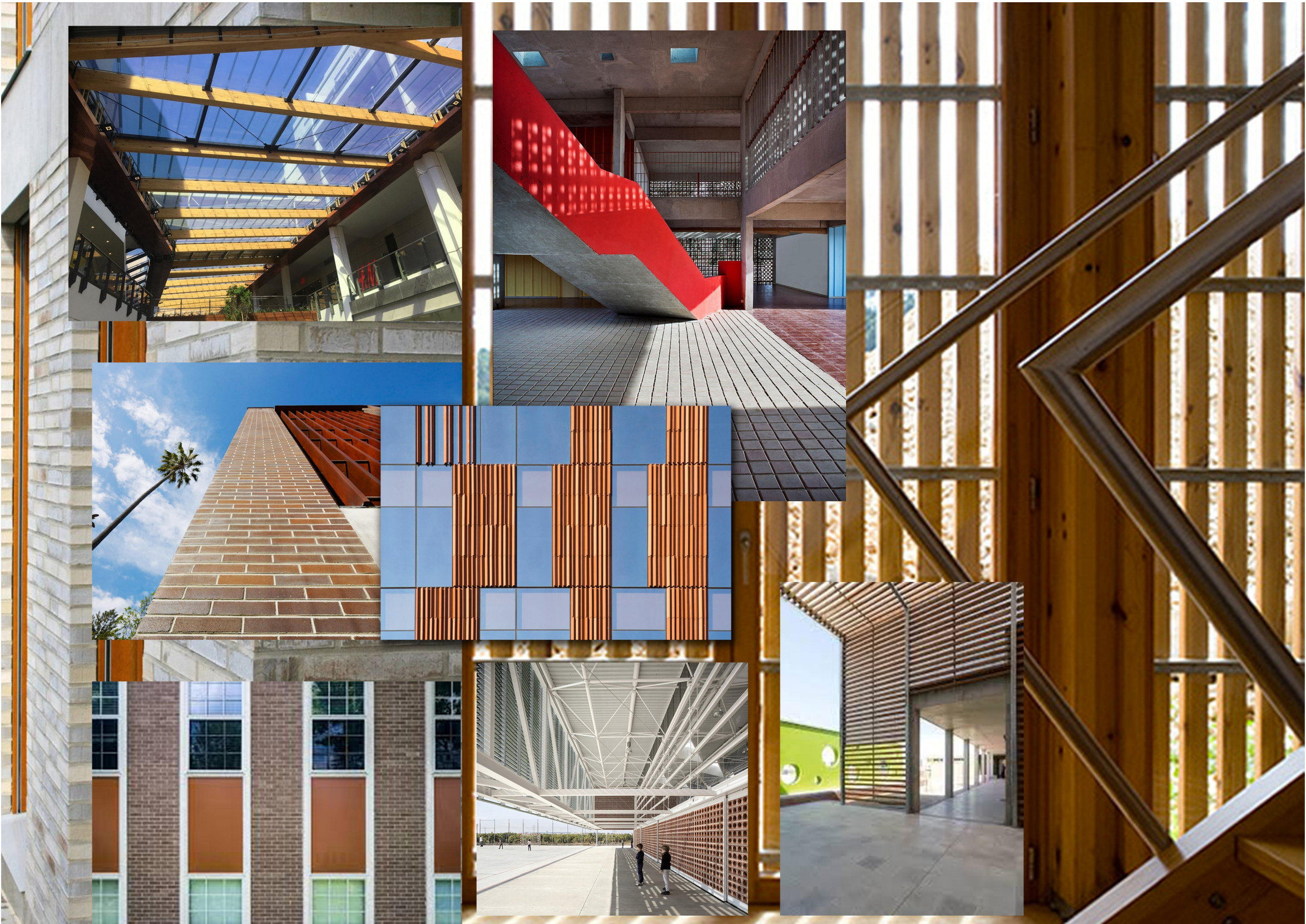
PART A - Master Plan
Harris Lane, Windsor

Drawing Title

**Proposed G & H Block Level 2
Plan**

Scale @ A3	Drawn:	Checked:
1:750	EA/DZ	EA
Project Number	Drawing Number	Issue
H2680WIN	SD016	L

5.1 Master Plan
Ideas Board 1



PART A MASTER PLAN

General Notes

This drawing is Copyright © Any design or drawing is not to be reproduced, either in whole or part, without written permission by Hayes Anderson Lynch Architects Pty. Ltd. Confirm all dimensions on site. Do not scale off drawings. All levels are approximate only and are subject to confirmation by licenced surveyor. All workmanship, materials and construction to comply with the Queensland Building Act 1975, the Queensland Development Code, the Building Code of Australia 2016, Premises Standard and AS1428.1. Work to be carried out in a neat and appropriate manner. Where ambiguities or discrepancies exist, Hayes Anderson Lynch Architects Pty. Ltd. shall be contacted for clarification.



22/08/18	L	Sign Off	EA
18/06/18	K	Preliminary Sign Off	EA
18/06/18	J	Preliminary Presentation	EA
14/06/18	H	Preliminary Presentation	EA
13/06/18	G	Preliminary Presentation	EA
08/06/18	F	Preliminary Presentation	EA
06/06/18	E	Preliminary Presentation	EA
05/06/18	D	Preliminary Presentation	EA
01/05/18	C	Preliminary Presentation	EA
25/05/18	B	Preliminary Presentation	EA
23/05/18	A	Preliminary Presentation	EA
Date	Issue Details	Checked	



ARCHITECTS
TOWN PLANNERS
INTERIOR DESIGNERS

3 / 709 MAIN STREET
KANGAROO POINT QLD 4169

P + 61 7 3852 3190

E reception@halarchitects.com.au

W www.halarchitects.com.au

Project

PART A - Master Plan

Harris Lane, Windsor

Drawing Title

Ideas Board 1

Scale @ A3 Drawn: EA/DZ Checked: EA

Project Number Drawing Number Issue
H2680WIN SD017 L

5.2 Master Plan
Ideas Board 2



PART A MASTER PLAN

General Notes
This drawing is Copyright © Any design or drawing is not to be reproduced, either in whole or part, without written permission by Hayes Anderson Lynch Architects Pty. Ltd. Confirm all dimensions on site. Do not scale off drawings. All levels are approximate only and are subject to confirmation by licenced surveyor. All workmanship, materials and construction to comply with the Queensland Building Act 1975, the Queensland Development Code, the Building Code of Australia 2016, Premises Standard and AS1428.1. Work to be carried out in a neat and appropriate manner. Where ambiguities or discrepancies exist, Hayes Anderson Lynch Architects Pty. Ltd. shall be contacted for clarification.



22/08/18	L	Sign Off	EA
18/06/18	K	Preliminary Sign Off	EA
18/06/18	J	Preliminary Presentation	EA
14/06/18	H	Preliminary Presentation	EA
13/06/18	G	Preliminary Presentation	EA
08/06/18	F	Preliminary Presentation	EA
06/06/18	E	Preliminary Presentation	EA
05/06/18	D	Preliminary Presentation	EA
01/05/18	C	Preliminary Presentation	EA
25/05/18	B	Preliminary Presentation	EA
23/05/18	A	Preliminary Presentation	EA
Date	Issue Details	Checked	

HAL
HAYES
ANDERSON
LYNCH
ARCHITECTS PTY LTD

ARCHITECTS
TOWN PLANNERS
INTERIOR DESIGNERS

3 / 709 MAIN STREET
KANGAROO POINT QLD 4169

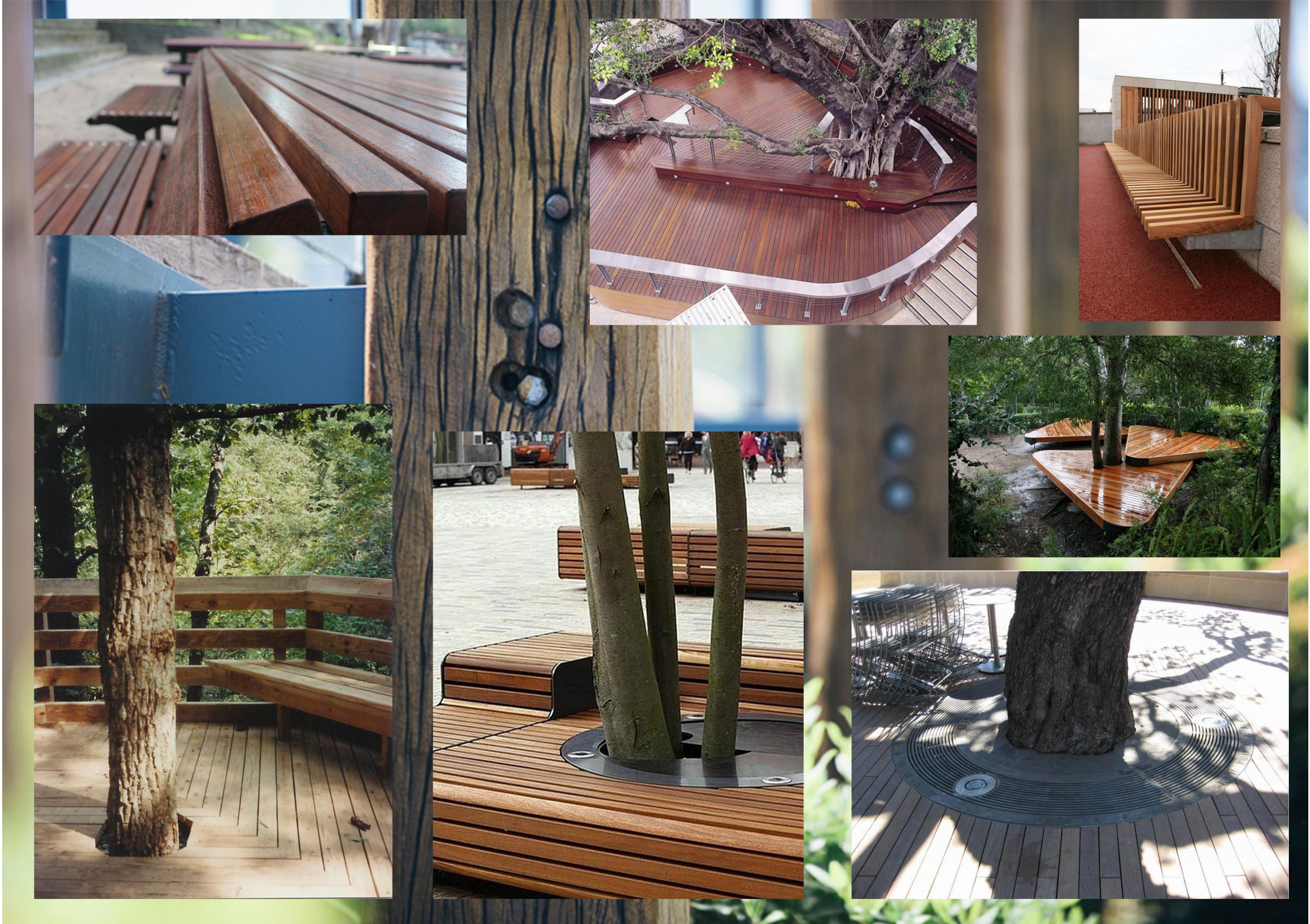
P + 61 7 3 8 5 2 3 1 9 0
E reception@halarchitects.com.au
W www.halarchitects.com.au

Project
PART A - Master Plan
Harris Lane, Windsor

Drawing Title
Ideas Board 2

Scale @ A3	Drawn: EA/DZ	Checked: EA
Project Number H2680WIN	Drawing Number SD018	Issue L

5.3 Master Plan
Ideas Board 3



PART A MASTER PLAN

General Notes
This drawing is Copyright © Any design or drawing is not to be reproduced, either in whole or part, without written permission by Hayes Anderson Lynch Architects Pty. Ltd. Confirm all dimensions on site. Do not scale off drawings. All levels are approximate only and are subject to confirmation by licenced surveyor. All workmanship, materials and construction to comply with the Queensland Building Act 1975, the Queensland Development Code, the Building Code of Australia 2016, Premises Standard and AS1428.1. Work to be carried out in a neat and appropriate manner. Where ambiguities or discrepancies exist, Hayes Anderson Lynch Architects Pty. Ltd. shall be contacted for clarification.



22/08/18	L	Sign Off	EA
18/06/18	K	Preliminary Sign Off	EA
18/06/18	J	Preliminary Presentation	EA
14/06/18	H	Preliminary Presentation	EA
13/06/18	G	Preliminary Presentation	EA
08/06/18	F	Preliminary Presentation	EA
06/06/18	E	Preliminary Presentation	EA
05/06/18	D	Preliminary Presentation	EA
01/05/18	C	Preliminary Presentation	EA
25/05/18	B	Preliminary Presentation	EA
23/05/18	A	Preliminary Presentation	EA
Date	Issue	Details	Checked

HAL
HAYES
ANDERSON
LYNCH
ARCHITECTS PTY LTD
ARCHITECTS
TOWN PLANNERS
INTERIOR DESIGNERS
3 / 709 MAIN STREET
KANGAROO POINT QLD 4169
P + 61 7 3852 3190
E reception@halarchitects.com.au
W www.halarchitects.com.au

Project
PART A - Master Plan
Harris Lane, Windsor

Drawing Title	Ideas Board 3		
Scale @ A3	Drawn:	Checked:	
	EA/DZ	EA	
Project Number	Drawing Number	Issue	
H2680WIN	SD019	L	